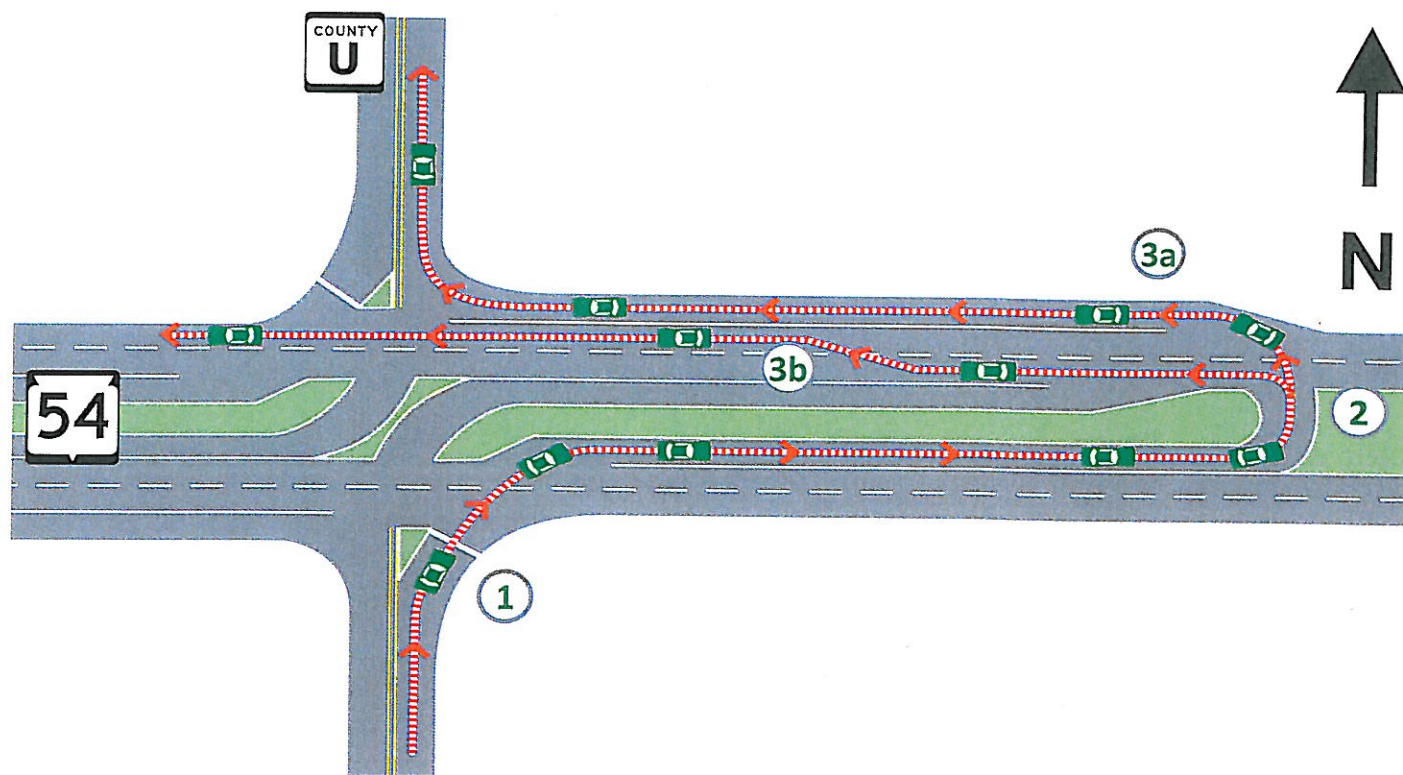


Driving the J-turn

WIS 54/Wood and Portage County U



Crossing WIS 54

- 1 Stop at stop sign. Proceed across lanes when a safe gap in traffic is present and continue along the J-turn crossover lane.
- 2 Yield to both lanes of traffic.
- 3a Proceed across both lanes of traffic when a safe gap in traffic is present. Enter the right turn lane and continue to County U.

Turning left onto WIS 54

- 1 Stop at stop sign. Proceed across lanes when a safe gap in traffic is present and continue along the J-turn crossover lane.
- 2 Yield to both lanes of traffic.
- 3b Proceed into closest lane when a safe gap in traffic is present. Move to the right lane when it is safe to do so.

Animated videos demonstrating how to drive the J-turn are available at:

<http://projects.511wi.gov/54countyu>